

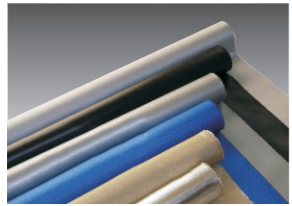


Temp. °C
耐温
-70to+300°C

Silicone Coated Fiberglass Fabric 涂硅胶玻璃纤维布

Style 型号	SP3732-80S	SP3732-130S	SP3732-160S	SP666-100S	SP666-200S	SP666-300S	SP3784-200S	SP3784-240S
Coating/Side 涂层/单双面	Silicone/1 硅胶/单面	Silicone/2 硅胶/双面	Silicone/2 硅胶/双面	Silicone/1 硅胶/单面	Silicone/2 硅胶/双面	Silicone/2 硅胶/双面	Silicone/2 硅胶/双面	Silicone/2 硅胶/双面
Weight(g/m2)±5% 克重	510	560	590	760	860	960	1080	1120
Thickness (mm) 厚度	0.50	0.55	0.57	0.80	0.90	0.92	1.00	1.10
Width (m) 宽度	1m, 1.2m, 1.5m, 1.8m			1m, 1.5m, 2m			1m, 1.5m, 2m	
Weave 纹路	Twill 斜纹			Satin 缎纹			Satin 缎纹	

Other coating weights and colors, fabric width and length can be customized.
其他涂层克重和颜色, 玻璃纤维布宽度和长度均可根据客户要求定制。

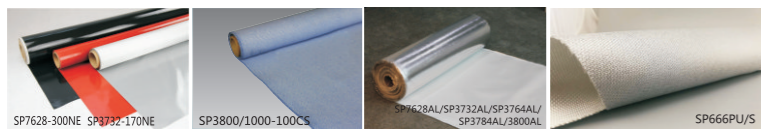


Temp. °C
耐温
-20 to +180

Polyurethane (PU) Coated Fiberglass Fabric 涂PU玻璃纤维布

Style 型号	SP7628-20PU	SP3732-30PU	SP3732-60PU	SP666-50PU	SP666-100PU
Coating/Side 涂层/单双面	PU/2	PU/1	PU/2	PU/1	PU/2
Weight(g/m2)±5% 克重	220	460	490	710	760
Thickness (mm) 厚度	0.21	0.45	0.46	0.66	0.67
Width (m) 宽度	1.00, 1.20, 1.50	1.00, 1.20, 1.50	1.00, 1.20, 1.50	1.00, 1.50	1.00, 1.50
Weave 纹路	Plain 平纹	Twill 斜纹		Satin 缎纹	

Other coating weights and colors, fabric width and length can be customized.
其他涂层克重和颜色, 玻璃纤维布宽度和长度均可根据客户要求定制。



Other Coated Fiberglass Fabrics 其他涂层玻璃纤维布

Product 品名	Neoprene Coated Fiberglass Fabric 氯丁橡胶涂层玻璃纤维布	Calcium Silicate Coated Fiberglass Fabric 硅酸钙涂层玻璃纤维布	Aluminum Foil Laminated Fiberglass Fabric 覆铝箔玻璃纤维布	Phenol Resin Coated Fiberglass Fabric 酚醛树脂涂层玻璃纤维布
Style 型号	SP7628-300NE SP3732-170NE	SP3800/1000-100CS	SP7628AL/SP3732AL/SP3764AL/SP3784AL/3800AL	SP666PU/S/S SP666PU/S/T
Working Temp.(°C) 温度	-20 to 180	-20 to 180	750	-20 to 180
Weight(g/m2)±5% 克重	500	600	1100	710 760
Thickness (mm) 厚度	0.35	0.45	1.50	0.66 0.67
Width (m) 宽度	1.00, 1.50	1.00, 1.50	1.00, 1.50, 1.80	1.00, 1.50 1.00, 1.50
Weave 纹路	Plain 平纹	Satin 缎纹	Plain 平纹	Satin 缎纹

Other coating weights and colors, fabric width and length can be customized.
其他涂层克重和颜色, 玻璃纤维布宽度和长度均可根据客户要求定制。

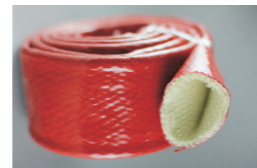


Other Fiberglass Products 其他玻纤产品



Max Temp. °C
最高工作温度
450-550°C

Style 型号	Product 品名	Thickness 厚度	Width 宽度	Weave 纹路
3750	Fiberglass Tape 玻璃纤维带	0.2MM	25MM-150MM (1" -6")	Plain 平纹



Style 型号	Products 品名	Size/Inner Diameter 规格范围	Rated Voltage 额定电压	Working Temp 工作温度	Melting Point 熔点
3850	Silicone Coated Fiberglass Sleeve 玻璃纤维硅胶套管	6MM-180MM	7kv-25kv	260°C	1650°C
Color 颜色	Red, Black, White, or customized 红色、黑色、白色等其他颜色可根据客户需求定制				



Style 型号	Products 品名	Package 包装方式	Thickness 厚度	Size 尺寸
3900	Fiberglass Fire Proof Blanket 玻璃纤维防火毯	PVC Box	0.45-0.5MM	1MX1M, 1.2MX1.2M, 1.5MX1.5M, 1.8MX1.8M or custom-made 或根据客户要求定制
3900BAG	Fiberglass Fire Proof Blanket 玻璃纤维防火毯	PVC Bag		

Max Temp. °C
最高工作温度
450-550°C

General Introduction

Tenglong Sealing and Thermal Insulation Products Manufactory Established in 1979, is a leading manufacturer and supplier of many styles of high-grade and top quality Gland Packings, Ceramic Fiber Products, Fiber Glass Products, Graphite Products, PTFE Products, Sealing Gaskets and Sheets.

Tenglong Sealing serves oil factories, gas factories, steel mills, marine and construction industry, food industry.

Tenglong Sealing has won the leading position in domestic and world-wide market. 85% of our products are exporting to Europe, South America, Australia, Africa, Middle East, other Asia region with more than fifty countries and regions.

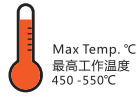
Advantage:
Modern Production Line
Imported Advanced Facility
Professional Manufacturing Technique
Quality Control:ISO9001:2008

Subsidiary Corporation:
Sunpass International Co., Ltd
Echo Industry Limited

Branch:
Shanghai Branch
Floor 12, No.580 Nanjing West Road, Jing'an District, Zhongyi Building, Shanghai, 200041, China
chelsea@sealings.cn

Agents:
Europe, Southeast Asia, UAE, Saudi Arabia
Welcome more companies to join Tenglong Sealing!

TENGLONG SEALING AND THERMAL INSULATION PRODUCTS MANUFACTORY
ADDRESS: No. 78 West Road Zhenxing, Lianghui Economic Zone, Yuyao, Zhejiang, 315403, China
Tel:86 574 62837603
Fax:86 574 62837601
Email: sales@sealings.cn
www.sealings.cn



Max Temp. °C
最高工作温度
450-550°C



Texturized Fiberglass Rope 膨体玻璃纤维绳		
Style 型号	Products 产品	Size 尺寸
3300S	Fiberglass Braided Square Rope 膨体玻璃纤维方绳	3MM-50MM
3300S-Graphite	Fiberglass Braided Square Rope Coated Graphite 膨体玻璃纤维方绳涂石墨	3MM-50MM
3200R	Fiberglass Braided Round Rope 膨体玻璃纤维圆绳	Dia.3MM-Dia.50MM
3000T	Fiberglass Twisted Rope 膨体玻璃纤维扭绳	Dia.3MM-Dia.50MM
3290L	Fiberglass Lagging Rope 膨体玻璃纤维松绳	Dia.13MM-Dia.50MM
3220R	Fiberglass Knitted Rope 膨体玻璃纤维针织绳	Dia. 5MM-25MM
3220R/G	Fiberglass Knitted Rope Coated Graphite 膨体玻璃纤维针织绳涂石墨	Dia. 5MM-25MM
3300S-Silicone/S	Fiberglass Square Rope with Silicone Core & Coated Silicone 膨体玻璃纤维硅胶芯盘根外涂硅胶	10MM-50MM
3300S-Silicone	Fiberglass Square Rope Coated Silicone 膨体玻璃纤维涂硅胶盘根	5MM-50MM
3200R-Silicone	Fiberglass Round Rope Coated Silicone 膨体玻璃纤维涂硅胶圆绳	Dia.6MM-Dia.50MM
3100SPW	Fiber Glass Rope Coated with PTFE 玻璃纤维绳浸四氟	5MM-50MM



Max Temp. °C
最高工作温度
450-550°C

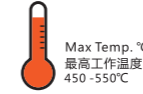


Texturized Fiberglass Tape 膨体玻璃纤维带			
Style 型号	Products 品名	Thickness 厚度	Width 宽度
3700	Fiberglass Tape 膨体玻璃纤维带		
3700G	Fiberglass Tape Coated with Graphite 膨体玻璃纤维带涂石墨		
3700HT	Heat Treated Fiberglass Tape 膨体玻璃纤维带(热处理)		
3700V	Texturized Fiberglass Tape Vermiculited 膨体玻璃纤维带涂蛭石	0.8MM-10MM	15MM-200MM
3700T	Fiberglass Ladder Tape 膨体玻璃纤维梯型带		
3700AL	Fiberglass Tape Coated with Aluminum Foil 膨体玻璃纤维带覆铝箔		
3700A	Fiberglass Tape With Adhesive Tape 膨体玻璃纤维带背胶		
3710	Fiberglass Knitted Tape 膨体玻璃纤维针织带	1.5MM-5MM	15MM-100MM



Max Temp. °C
最高工作温度
450-550°C

Texturized Fiberglass Yarn 膨体玻璃纤维纱		
Products 品名	Style 型号	Size 尺寸
C-GLASS BULK FIBERGLASS YARN 膨体玻璃纤维纱(中碱)	3600C	425TEX-2400TEX
E-GLASS BULK FIBERGLASS YARN 膨体玻璃纤维纱(无碱)	3600E	425TEX-2400TEX



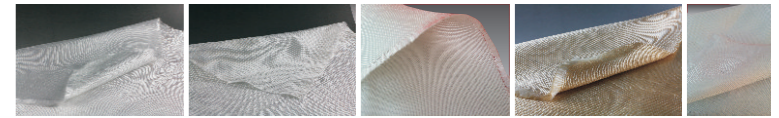
Max Temp. °C
最高工作温度
450-550°C



Texturized Fiberglass Fabric 膨体玻璃纤维布			
Style 型号	Products 品名	Thickness 厚度	Width 宽度
3800	Fiberglass Fabric 膨体玻璃纤维布		
3800V	Fiberglass Fabric Coated Vermiculite 膨体玻璃纤维涂蛭石布	0.8MM-3MM	500MM-2000MM
3800AL	Fiberglass Fabric Coated with Aluminum Foil 膨体玻璃纤维布覆铝箔		
3800HT	Heat Treated Fiberglass Fabric 膨体玻璃纤维布(热处理)		



Max Temp. °C
最高工作温度
450-550°C



Fiberglass Fabric 玻璃纤维布					
Style 型号	Products 品名	Thickness 厚度	Width 宽度	Weight 克重	Weave 纹路
SP7628	7628 Fiberglass Fabric 玻璃纤维布	0.2MM	1000MM-1270MM	200+/-20 G/M2	Plain 平纹
SP3732	3732 Fiberglass Fabric 玻璃纤维布	0.43MM	1000MM-2000MM	450+/-20 G/M2	Twill 斜纹
SP3764	3764 Fiberglass Fabric 玻璃纤维布	0.7MM	1000MM-2000MM	660+/-20 G/M2	Satin 缎纹
SP3784	3784 Fiberglass Fabric 玻璃纤维布	0.8MM	1000MM-2000MM	850+/-30 G/M2	Satin 缎纹
SP3784HT	Heat Treated 3784 Fiberglass Fabric 玻璃纤维布(热处理)	0.8MM	1000MM-2000MM	850+/-30 G/M2	Satin 缎纹

● Classification based on weave pattern

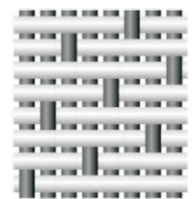
Plain Weave



Twill Weave



Satin Weave



Warp
Weft

www.sealings.cn

